



F

129

C63 S1

Author \_\_\_\_\_

\_\_\_\_\_  
\_\_\_\_\_

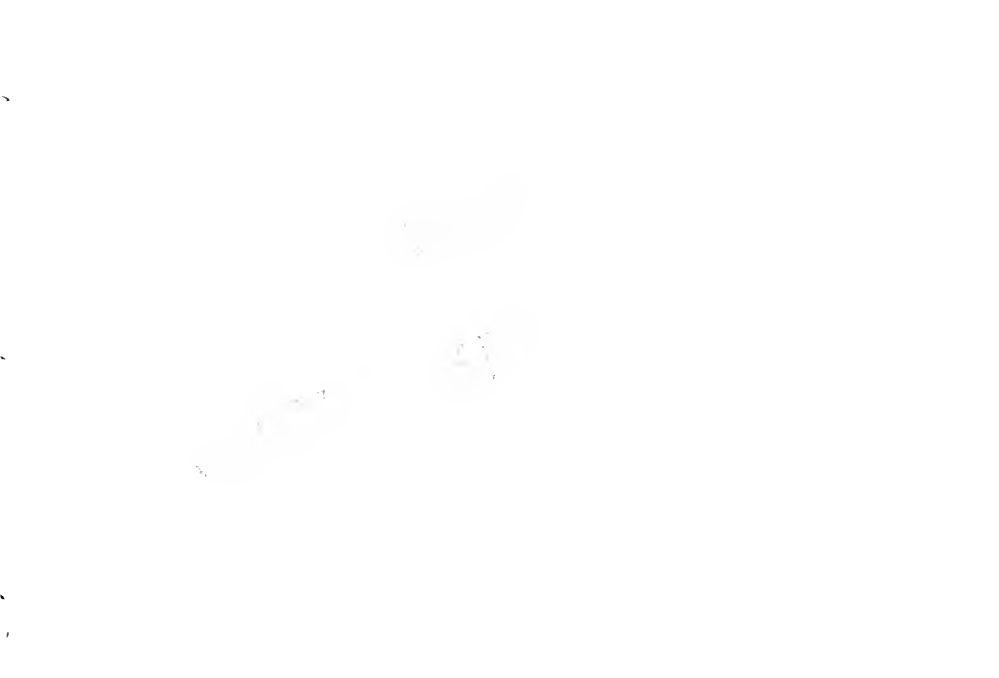
Title \_\_\_\_\_

\_\_\_\_\_  
\_\_\_\_\_

Imprint \_\_\_\_\_

\_\_\_\_\_







SOUVENIR

+ of +

CLIFTON + SPRINGS, + N. + Y.

THE SANITARIUM

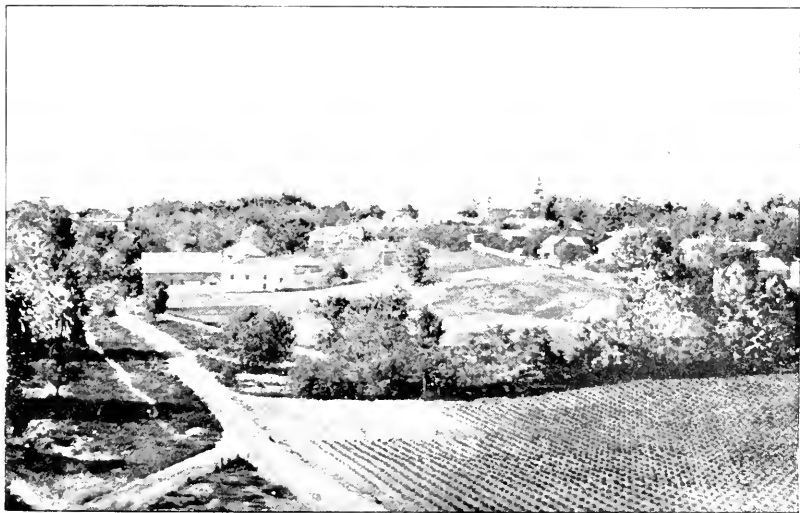
AND ENVIRONS

By John Wentworth Sanborn A. M.

ILLUSTRATED

Copyright, 1889,  
By JOHN WENI WORTH SANBORN

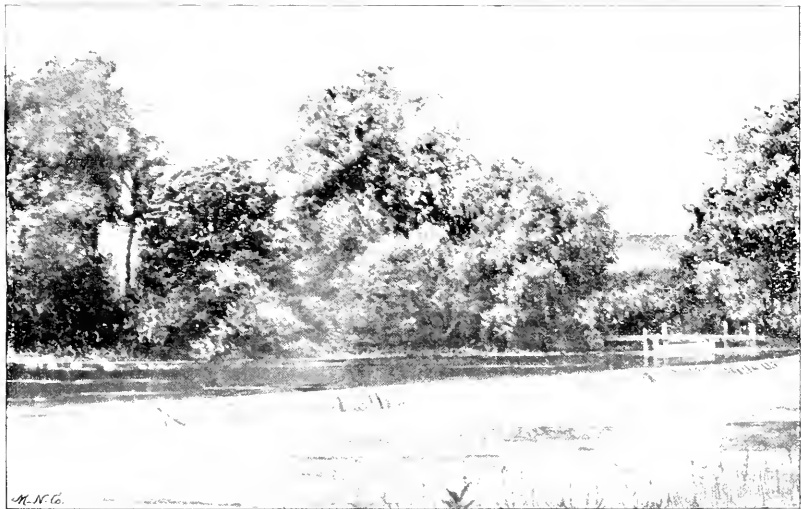
This book was printed on the "Perfected Prouty Press-  
No. 1," made by Geo. W. Prouty & Co., Boston, Mass.



BIRD'S-EYE VIEW OF THE VILLAGE, LOOKING NORTH FROM SANFARUM HILL







A FAVORITE RESORT ON "THE OUTLET."



## Clifton Springs

A VERITABLE MODERN BETHESDA! to whose healing streams multitudes have come for forty years! Integrity, energy, thrift, and culture characterize the inhabitants. Flowers, tropical and native, are cultivated in profusion. Lawns and parks adorn a landscape unsurpassed for beauty. Clifton Springs is not only a Bethesda for healing, but "a garden of the Lord" for fruitfulness. Grains and fruits, impelled by the natural fertility of the soil, respond in lavish measure to cultivation. Clifton Springs is midway between Canandaigua and Geneva, on the Auburn branch of the New York Central Railroad. In the early days, the Indians, in their ceaseless journeyings to and from Lake Erie and Onondaga Lake, gathered here in great numbers, and tarried for many moons, to partake of the "healing waters."

The pleasure-seeker finds gratification in the charming drives about Clifton, such as, to Phelps, Hopewell, Canandaigua, and Palmyra. On the Palmyra road, six miles from Clifton Springs, is the famous Mormon Hill, where Joseph Smith pretended to have found the golden tablets of the Book of Mormon.

One mile from Clifton, flows the outlet of Canandaigua Lake. The lovely gems of scenery here attract the sentimental, and the matter-of-fact, as well. Lovers and staid philosophers delight to wander amid the charming scenery.





AN AUTUMN SCENE ON "THE CUTLIP"





A RESTFUL SPOT - SANLIAPUM PARK





## AN IDEAL PLACE OF RESIDENCE.

ROCKY RUN, at less than a mile in an opposite direction, furnishes a striking contrast. Two waterfalls of surpassing beauty give fame to "Rocky-Run."

John Shekel was one of the earliest settlers; William Hanna arrived next, and the third family was that of Arnold Warfield of Maryland. The present permanent population of Clifton Springs is about fourteen hundred. Superior schools, including one of the best of Seminaries; prosperous business, and manufacturing enterprises; well-built and progressive churches; two choice libraries, containing almost three books to every individual of the population; perfect sanitary arrangements; broad, well-shaded streets; paved, and cleanly sidewalks; an industrious, intelligent and cultured population, all combine to render Clifton Springs an ideal place of residence. Exceptional opportunities for refinement are here enjoyed. The people are continually in contact with the best culture of the world in the persons of distinguished clergymen, presidents and professors of colleges, authors, and authoresses who sojourn at the Sanitarium for health and vacation rest. The Sulphur Springs are the out-gush of a subterranean stream.

So abundant has the flow always been that for years the stream drove an over-shot wheel for a mill, and there is not a drop's diminution up to the present time. The source of the springs is remote and deep. Neither floods nor drouths ever affect the flow. The temperature of the sulphur-water never varies; the springs never freeze.





“ROCKY RUN” WATERFALL





A QUILT NOOK ON "ROCKY RUN"





THE SULPHUR BROOK ON THE SANITARIUM GROUNDS, AS VIEWED FROM THE VILLAGE STREET





## The Springs.

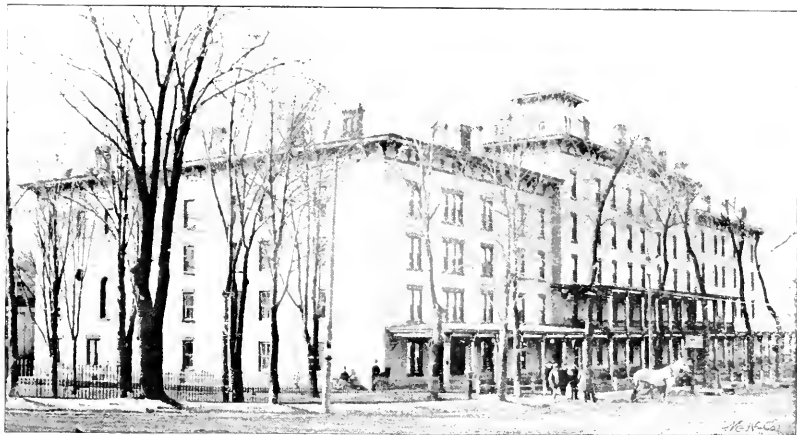
THE whole extent of the springs is a space two hundred yards wide, and about one thousand yards long. Streams in general, in this section, flow from south-west to north-east, but the sulphur-vein flows from north-east to south-west. The analysis of the springs made by the late Dr. Chilton, of New York, shows the water to be almost identical with the White Sulphur Springs of Virginia, and heavily charged with remedial properties. The following is the analysis:

Sulphate of Lime, - -	17.30,	Sulphate of Magnesia, - -	4.12,
Sulphate of Soda, - -	1.94,	Carbonate of Lime, - -	2.43,
Carbonate of Magnesia, -	3.08,	Chloride of Sodium, - -	2.32,
Chloride of Calcium, -	1.02,	Chloride of Magnesia, - -	1.02.

Hydrosulphuric, and Carbonic Acids also occur.

In this age of noble deeds, what is worthier of record than the establishing by Dr. Henry Foster of the Sanitarium, and his giving it as a Christian home for missionaries and their families dependent on their salaries for support; ministers of the gospel, and their families also dependent on their salaries; teachers, and indigent church members who are unable to pay for the treatment of the institution. While gratuities are limited by the necessities of the institution to receive paying patients to finish the improvements, and maintain the institution in a healthy condition; should parties of the above classes board outside, there is no limit to the gratuities. In the year 1889, the charities amounted to over twenty-three thousand dollars, and for fifteen years they have averaged twenty thousand dollars a year.





THE SANIARIUM--MAIN BUILDING.



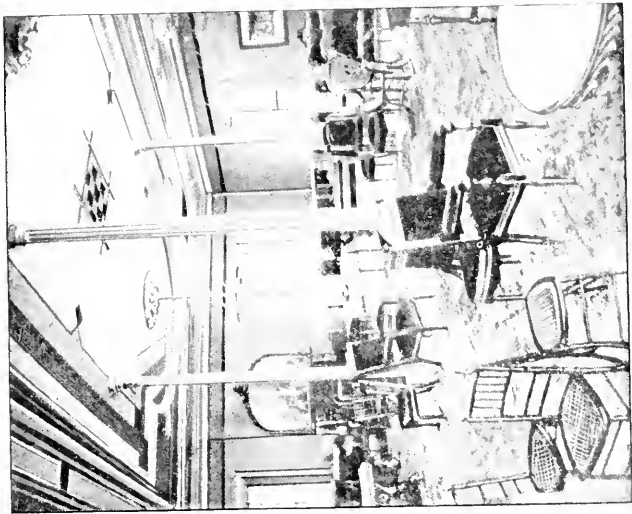


FIG. 11. SANDALWOOD PARLOR.



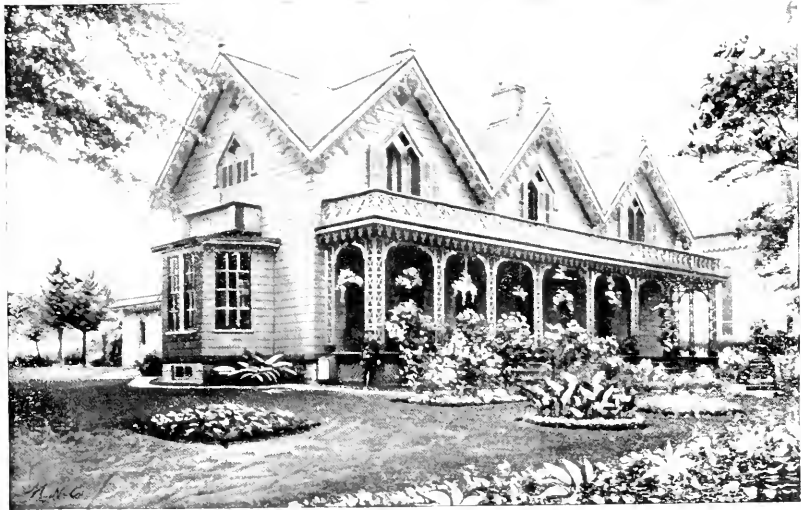
## RETROSPECTIVE.

IN the year 1850, Dr. Foster found here a small bath-shed and tub with the rudest accommodations. Purchasing these and ten acres of land, he threw his indomitable energy into the task of building up a great Institution for the healing of the people. Behold the structures of to-day! One is four and five stories high, and two hundred and forty feet front, with an east wing one hundred, and the west wing three hundred, feet deep, with three hundred rooms, reached by elevators, for guests and attendants; also rooms for the application of dry electricity, the treatment of throat difficulties with compressed air, Turkish baths, Air baths, Electro-Thermal, and Chemical baths, also Sulphur baths, Swedish movements, Sitz, and Foot baths, and Salt-rubs. Ah, who is there that does not recall with *glowing fervor* the Salt-rubs! And there are the dining and waiting rooms, offices, parlor, Chapel, and gymnasium.

The "Annex" across the way is two hundred and twenty feet front, with sixty rooms besides bath rooms, office, and parlor, with a new addition five stories high, sixty-four by seventy-five feet, and strictly fire-proof, containing ladies' bath rooms, reading, and other rooms. All the buildings are heated with steam generated four hundred feet away insuring perfect safety from fire. The male help is organized into a very creditable hose-company fully equipped. Electricity and gas are produced on the premises. The Sanitarium grounds comprise between fifty and sixty acres, beautifully laid out.

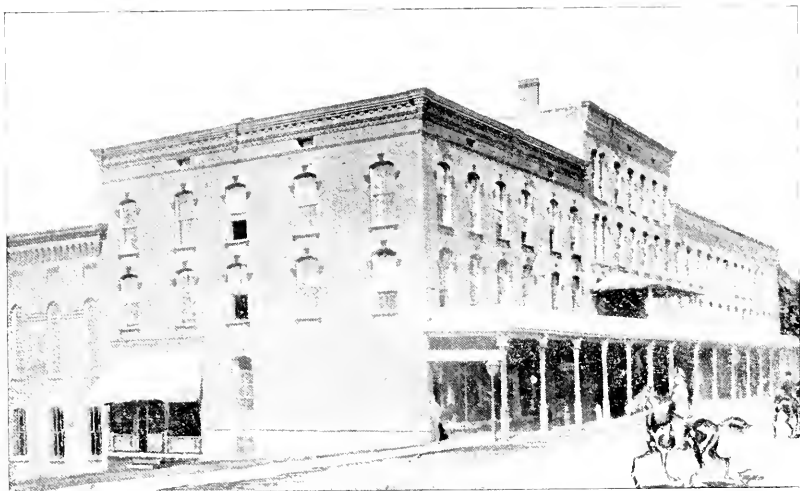






RESIDENCE OF DR. HENRY FOSTER.





THE ANNEX.

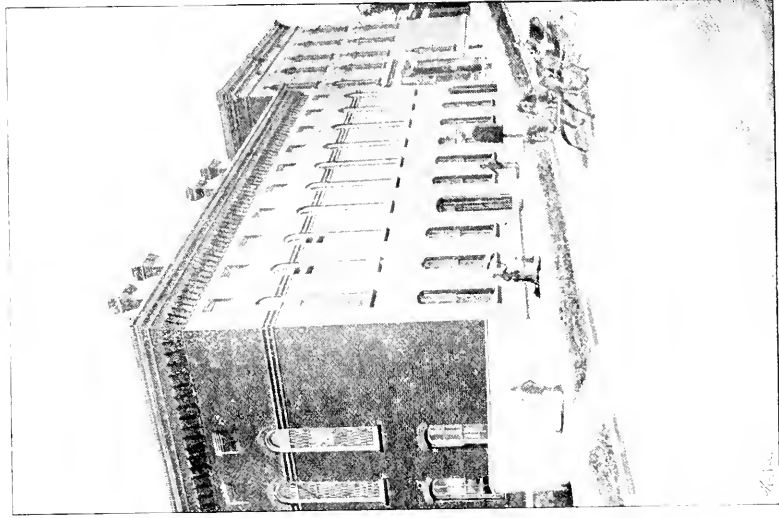


## Local Advantages.

IN the western part of the "Annex" are the rooms of a very prosperous Young Men's Christian Association, enriched with one of the choicest tree libraries, the gift of Mr. Andrew Peirce and Dr. Foster. The gifts of Mr. Peirce to the village amount to fifteen thousand dollars, and include the handsome Pavilion over the great spring. Here once a week multitudes throng in summer time to enjoy the music by the band furnished by the Sanitarium and merchants. The Sanitarium farm, of two hundred and seventy acres on what is termed "the outlet," is worth, with blooded stock and creamery, upwards of fifty thousand dollars. Purest milk, richest cream, choicest butter and ice-cream are here produced abundantly for the use of the Sanitarium.

Dr. Foster holds, and very properly, that a "consistent and religious faith has a salutary effect upon the sick," hence chapel services are held regularly. The Chapel, with its fine pipe organ and hymns of praise, is dear to many a heart. A religious service for ladies is conducted by Mrs. Foster every Saturday evening. The Rev. Lewis Bodwell has been the chaplain since 1870. The large staff of skilled physicians of both sexes use every remedial agent known. This is, in fact, a great University of medical skill, and more than three thousand of the best classes of persons annually avail themselves of its unsurpassed advantages.

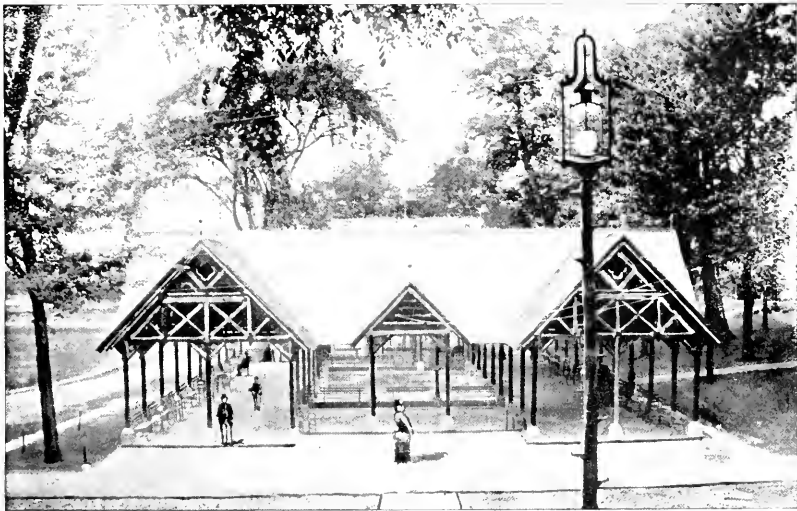




ROOMS OF THE Y. M. C. A

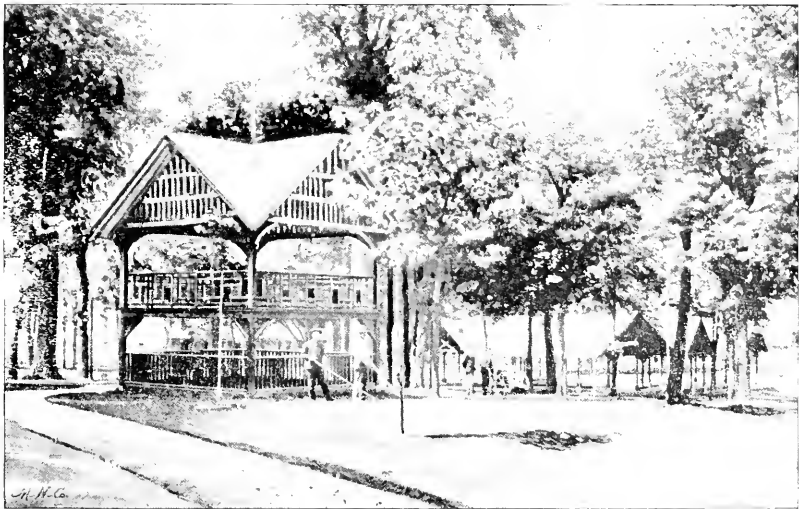






PIERCE PAVILION OVER THE GREAT SPRING





THE BAND STAND, LOOKING TOWARDS THE SANITARIUM AND PEACE PAVILION.



## A NOBLE BENEFACTION.

ALL of this magnificent property, now amounting to over \$550,000, Dr. Foster has dedicated to the service of God, by executing a deed of trust conveying it in perpetuity, to a Board of Trustees representing the leading evangelical denominations.

Dr. Foster easily ranks with Willberforce, Peabody, Muller, and all world-renowned philanthropists. Thousands rise up to call Doctor, and Mrs. Foster, blessed.

### A PERSONAL EXPLANATION.

The author of this book desires to add, that he has not been employed by any authorities of the Sanitarium in any way to prepare this volume, but himself assumed the entire expense and responsibility. He desired an illustrated Souvenir of Clifton; finding none, he set about making one. He desires to acknowledge here the many courtesies shown by Dr. Foster in giving him access to the Deed of Trust, and other public documents, and to return thanks to Mr. E. W. Copeland, Electrician, for information.

The author trusts that this result of his work will afford pleasure to hundreds who, like himself, have felt the need of such a Souvenir.

JOHN WENTWORTH SANBORN,  
LOCKPORT, N. Y.





BRIDGE OVER THE SULPHUR STREAM IN THE SANITARIUM PARK





## The Clifton Springs Seminary.

ON the following page we present a view of the SEMINARY, and a brief description will add interest to this book. The Clifton Springs Seminary chartered in 1868, and the Foster School established in 1875, were united under one management in 1888.

The location of the School is one of the most commanding and beautiful within the bounds of the municipal corporation. The grounds are ample and well supplied with shade trees. The building erected for the school is capacious; rooms large, sunny and thoroughly furnished. The sanitary conditions are believed to be perfect. The aims of the Institution are, sound scholarship and careful personal attention. The Seminary offers to twenty resident pupils--girls--the combined freedom and oversight of family life, while admitting them to the class advantages provided for seventy-five pupils.

Special attention is given to the fitting of pupils for college. Superior advantages are offered in Music and Art. One can easily procure a Catalogue by addressing the Principal, WILLIAM A. DEERING, A. M.

Professor Deering is always glad to have parents visit and inspect the school and all its surroundings.





THE CLIFTON SPRINGS SEMINARY



**PATENTED TIN-WARE**

→4 SPECIALTIES. ←

—451—

*Foremost among the Stirring  
Industries of Clifton Springs is The  
Clifton Springs Manufacturing Co.*

*An incorporation which, since its  
Organization in 1882, has continued to  
add to its line of Manufactures, and to  
Enlarge its Territory of Trade, until  
now its Excellent Wares are Known  
and Sought after in nearly every sec-  
tion of the United States, and, to some  
extent, through exportation, in Foreign  
Countries. Their Principal Products are  
PATENT ANTI-RUSTING Tin-ware,  
and MRS. VAN DEUSEN'S PATENT*

∩ CAKE MOLDS ∩

*Of Both of Which They are*

∴ THE SOLE ∴

∴ MANUFACTURERS. ∴



\* THE WORLD'S BEST \*

SOLD BY

**A. A. RAYMOND,**

CLIFTON SPRINGS, N. Y.,

— — — DEALER IN — — —



**GENERAL HARDWARE.**

*GALVANIC SCISSORS*

*AND SHEARS*

*AS A SPECIALTY.*

ARTISTS' MATERIAL, Etc.

 FRUIT ÷ OF ÷ THE ÷ VINE 

» PUT UP EXPRESSLY FOR SACRAMENTAL USE «

By Seneca Chief Vineyard Company, Limited.

Clifton Springs, Ontario County, N. Y.

J. H. McCarty, M. D., D. D., President.    H. K. Carpenter, Secretary.    T. W. Barker, Treasurer.

*The FRUIT OF THE VINE is put up with the greatest of care. It is made from ripe clusters of grapes gathered fresh from the vines, and is warranted to be absolutely free from every trace of alcohol. Being rich in the fruity flavor of the grape and free from sediment, we regard it as an article of great merit. The bottles containing it are hermetically sealed with nickel screw tops instead of ordinary corks. It is always ready for use, and is sold very reasonably. FOR FURTHER PARTICULARS AND PRICE-LIST,*

ADDRESS, SENECA CHIEF VINEYARD CO., Limited,

Clifton Springs, Ontario County, N. Y.

CHAS. BUNDY

DEALER IN

BOOKS, STATIONERY,  
FANCY GOODS, TOYS, ETC.  
PHOTOGRAPHS OF ALL THE  
PHYSICIANS\*  
AND A FINE LINE OF VIEWS,

\*♦♦♦

SOLE AGENT IN CLIFTON FOR THIS BOOK.

SANITARIUM ANNEX,

Clifton Springs, N. Y.

Dr. Frank A. Post,

DENTIST

— Parsons Block, —

Clifton Springs, N. Y.



## ✕ WHEAT BERRY FLOUR ✕

Is made from the WHOLE WHEAT reduced to a fine flour, thereby retaining all the properties that are nutritious and life-giving in wheat, but having removed from it the large irritating woody bran particles which constitute the outer coating of the kernel or berry. As this flour is made from No. 1 Hard Duluth Wheat which contains more Gluten than any other variety, it is far superior to all varieties of Graham and brown flours, which can only be made from starchy winter wheats.

Since the first introduction of this flour it has met with success, and we have many testimonials from eminent men regarding its superior value, among whom is Dr. Kellogg, of the Battle Creek Sanitarium, under whose chemical analysis it was found to contain a larger percentage of Gluten than any other flour in the market.

This flour is manufactured by MR. GEO. T. CHESTER, Merchant Miller, of Lockport, N. Y., and the sale placed in the hands of the undersigned. Should your grocer not have the flour in stock, we would be glad to ship to your address any quantity desired. It is put up in 5-lb. packages, 12 in a case; also in  $\frac{1}{2}$  and  $\frac{1}{4}$  bbl. sacks, and in  $\frac{1}{2}$  and whole bbls., in wood. Orders by mail will receive prompt attention.

**MC DOWELL & CO.,** 48 MAIN ST., LOCKPORT, N. Y.  
**H. A. COOLEY, SUCCESSOR TO THE ABOVE.**

3 OLIVE OIL 2  
 FOR THE TABLE  
 5 AND FOR MEDICAL USE. 5

The larger part of my importation of materials for perfumery comes from a locality in the south of France, which produces the finest quality of Olive Oil for the table and medicinal use. I buy it in considerable quantity, and always have it fresh.

This Oil is the "first run" from olives grown in the most favored Olive region, picked out one by one with the most incredible carefulness. It is designed for the *enfleurage* process in perfumery and its quality is far beyond the requirements of commerce.

It is sold by retail druggists at a price but little higher than is asked for the common article.

There is as much difference in pure Olive oil as there is in table butter.

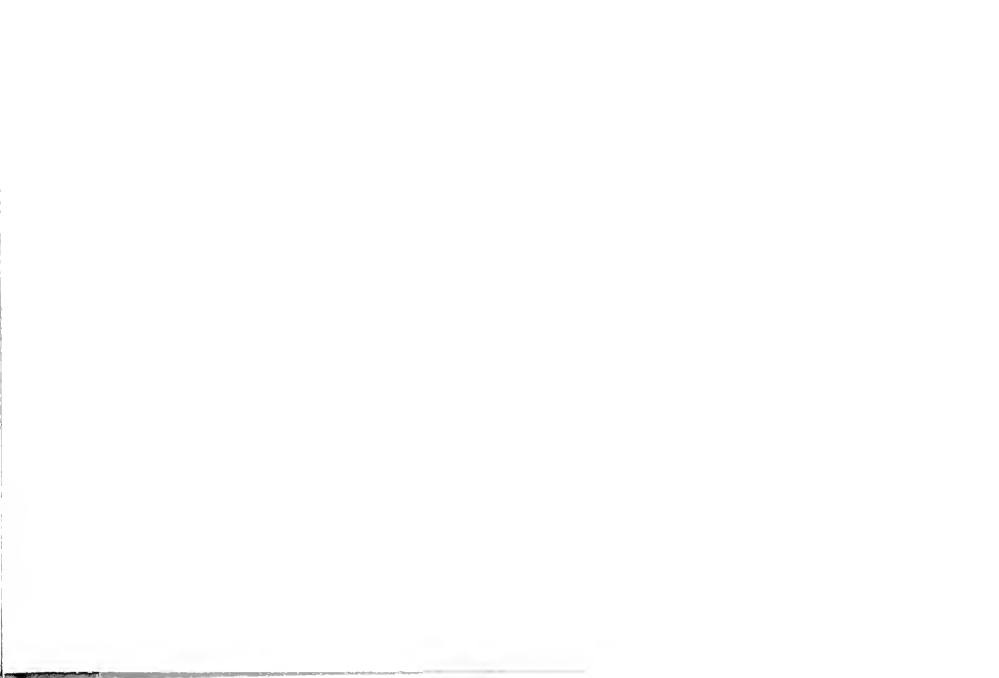
ALFRED WRIGHT,  
*Manufacturing Perfumer,*

ROCHESTER, N. Y.



The Pioneer Seed Catalogue of America, contains complete list of Vegetables, Flowers, Bulbs, Potatoes and Small Fruits, with descriptions and prices. Department of Specialties and all Worthy Novelties. Same shape and style as proved so satisfactory last year. Many new and elegant illustrations, handsome colored plate 8x10 1/2 inches, and frontispiece. **Special Cash Prizes \$1000.00; see Floral Guide.** Every person who owns a foot of land or cultivates a plant should have a copy. Mailed on receipt of 10 cents, which amount may be deducted from first order. Abridged Catalogue Free. **Pure Stocks. Full Measure. Prices Low for Prompt Orders.**

**JAMES VICK, SEEDSMAN, Rochester, N. Y.**







LIBRARY OF CONGRESS



0 014 222 353 3